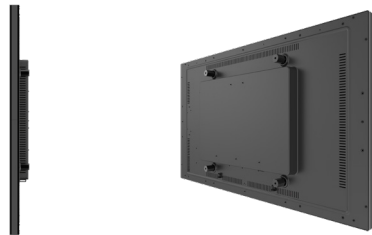


# DS-430P-A1

## 43" PCAP Touch Monitor

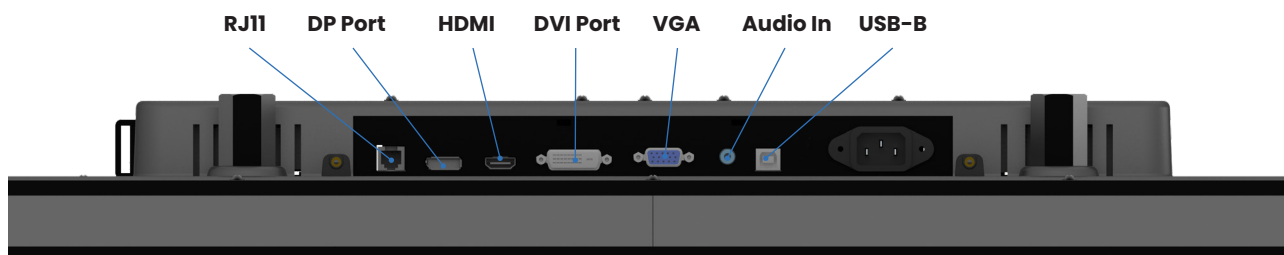


### Description

The digital signage, DS-430P-A1, is a 43" Full HD (1920 x 1080) projected capacitive, 40 touch solution. This digital signage solution encourages effective and efficient user collaboration and engagement. The ultra slim build coupled with advancements in touch technology, ensures that every user interaction is effortless and effective. Whether it is collaborative applications, way-finding capabilities, or custom branded kiosk, the DS-430P-A1 solution retains everything desired in a large format touchscreen.

### Featured Specifications

- Size: 43" TFT LCD
- Maximum Resolution: 1920 x 1080
- Contrast Ratio: 4000:1
- Aspect Ratio: 16:9
- Brightness: 400 nits (w/o Touch), 328 nits (P-CAP)
- View Angle: H:178°, V:178°
- Video Port: 1 x VGA, 1 x HDMI 1.3, 1 x DP 1.2, 1 x DVI
- Warranty: 3 year



# Specifications

## Touch LCD Display

|                        |                      |
|------------------------|----------------------|
| Touch Screen           | Projected Capacitive |
| Touch Points           | 40                   |
| Touch Screen Interface | USB-HID (Type B)     |
| Screen Treatment       | Anti-Glare           |

## I/O Ports

|              |  |
|--------------|--|
| Serial Port  | 1x RJ11 (for Remote Key)                           |
| USB Port     | 1 x USB 2.0 (Type B) for Touch Interface (USB-HID) |
| Video Port   | 1 x VGA, 1 x HDMI 1.3, 1 x DP 1.2, 1 x DVI         |
| Audio Port   | 1 x audio in                                       |
| Power Input  | 1 x AC Power Input                                 |
| Power Output | 5V/2.5A DC output                                  |

## Physical Properties

|                           |                              |
|---------------------------|------------------------------|
| Power Supply              | AC Input 100~240VAC, 50~60Hz |
| Speaker                   | 2 X 12W                      |
| Housing Color             | Black                        |
| Construction              | Glass, AL, Plastic (ABS)     |
| Compliance                | Front Panel IP65 Compliant   |
| Dimensions (W x H x D) mm | 983.2 X 571.4 X 82.3         |
| Net Weight (kg)           | 19.5                         |
| Gross Weight (kg)         | 25.0                         |
| Carton (W x H x D) mm     | 1130x 710 x 190              |
| VESA                      | 400 x 400 mm                 |
| Ball Drop                 | IK08                         |

## Safety

|                |                            |
|----------------|----------------------------|
| Certifications | CE, FCC, UL/CUL, CCC, RoHS |
|----------------|----------------------------|

## Environment

|                       |  |
|-----------------------|--|
| Operating Temperature | 0°C ~ 40°C, 20% ~ 80% RH. Non-Condensing   |
| Storage Temperature   | -20°C ~ 60°C, 20% ~ 90% RH. Non-Condensing |

## Optional Peripheral

N/A



[www.MicroTouch.com](http://www.MicroTouch.com) | [us.orders@microtouch.com](mailto:us.orders@microtouch.com)  
TES America, LLC | 215 Central Avenue, Holland, MI 49423 | (616) 786-5353

The information presented in this specification sheet is intended as general information about MicroTouch products and is subject to change. Product specifications and warranties will be governed by TES America, LLC. standard terms and conditions of sale. Products are subject to availability. Copyright © 2021 TES America, LLC. All rights reserved. MT21-1032