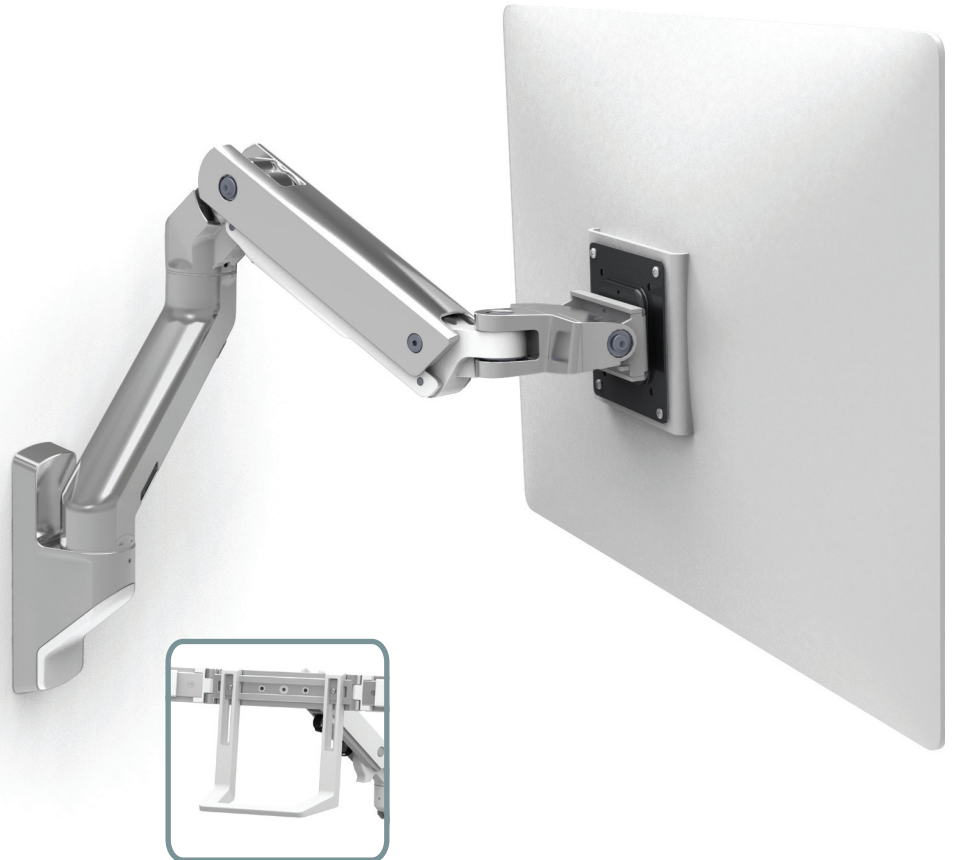


# ergotron<sup>®</sup>

*moving you forward*

## **HX** **Wall Monitor Arm**

- Allows you to work comfortably and helps reduce eye, back and neck strain
- Adjust displays with a light touch, thanks to Constant Force™ technology
- Frees up space in tight areas by folding arm when not in use
- Passes Ergotron's 10,000-cycle motion test for years of trouble-free height adjustment
- 10-year warranty



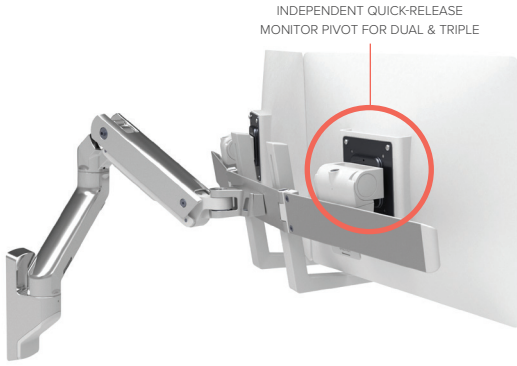
### SLEEK NEW POST DESIGN



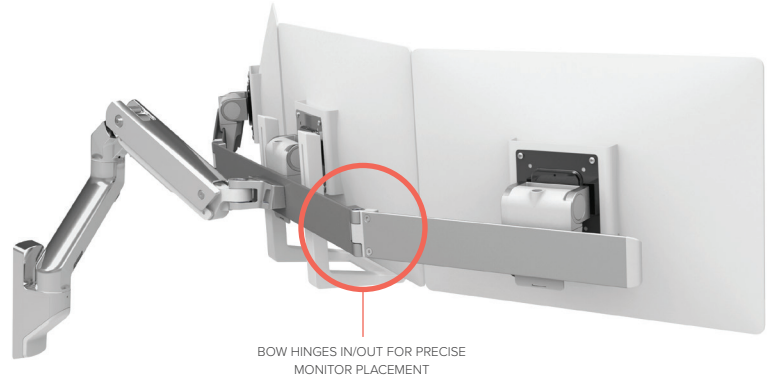
Add flexibility and superior ergonomics to your monitor(s) with the HX Wall Monitor Arm. The dual/triple hinge bow attaches directly to the arm to support two 32" or three 24" monitors and includes a handle for easy positioning. Your monitor stays within your workspace with a rotation stop that limits the range to 180°.

# HX Wall Monitor Arm

HX WALL DUAL MONITOR ARM



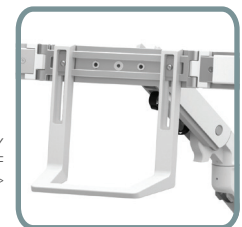
HX WALL DUAL MONITOR ARM WITH TRIPLE MONITOR BOW KIT



Large, ultra-wide or curved monitors continue to grow in popularity with gamers and office users. Our popular HX Desk and Wall Monitor Arms needed a new tilt pivot to support monitors 6–12" (15.2–30.4 cm) deep. HX HEAVY-DUTY TILT PIVOT 98-540-216



< CABLES ROUTE BENEATH THE ARM, OUT OF THE WAY



HANDLE FOR EASY POSITIONING OF MONITORS >



**HX Wall Monitor Arm**



**HX Wall Dual Monitor Arm**



**HX Triple Monitor Bow Kit**

Part # color	45-478-026 polished aluminum (Americas, APAC) 45-478-216 white (Worldwide)	45-479-026 polished aluminum (Americas, APAC) 45-479-216 white (Worldwide)	98-009-026 polished aluminum (Americas, APAC) 98-009-216 white (Worldwide)
Includes	HX arm, extension, monitor pivot, wall mount and monitor mounting hardware	HX arm, extension, hinge bow, 2 monitor pivots, handle, wall mount and monitor mounting hardware	3 monitor pivots, triple hinged bow and handle (Requires HX Single or Dual Monitor Arm ordered separately)
Typical LCD Size	≤ 49"	≤ 32"	≤ 24"
<small>LCD SIZE IS APPROXIMATION. DIMENSION IS DIAGONAL MEASUREMENT OF SCREEN. LCD SIZE ON HX SINGLE MAY BE EXCEEDED AS LONG AS SCREEN WEIGHT DOES NOT EXCEED MAXIMUM WEIGHT CAPACITY OF THE MOUNT.</small>			
Weight Capacity	20–42 lbs (9–19 kg) per monitor; use HX tilt accessory 98-540-216 for monitor depth > 6" (15 cm) and weight > 28 lbs (12,7 kg)	5.0–17.5 lbs (2,3–8,0 kg) per monitor	2.0–10.2 lbs (1,0–4,6 kg) per monitor
Lift	11.5" (29,2 cm)		
Tilt	Quick release monitor on Dual and Triple only †70° / †5°		
Extension Pan	360°		
Base Rotation	180°		
VESA	VESA FDMI MIS-D, 100/75, C (100 x 100 mm & 75 x 75 mm hole pattern); HX Single also includes 200 x 200 mm		
Extension	≤ 24.8" (63 cm)	≤ 24.5" (62,2 cm)	≤ 24.5" (62,2 cm)
Shipping Weight	18.3 lbs (8,3 kg)	26.9 lbs (12,2 kg)	20,5 lbs (9,3 kg)
Shipping Dimensions	12.0" x 19.2" x 7.0" (30,5 x 48,8 x 17,8 cm)	16.0" x 18.8" x 7.5" (40,6 x 47,8 x 19,0 cm)	18.5" x 27.8" x 7.7" (47,0 x 70,6 x 19,6 cm)
Warranty	10 years		
Pro Install Option	SRVC-PI-01	SRVC-PI-02	SRVC-PI-02

Download additional resources at [ergotron.com](http://ergotron.com).

For more information:

USA & Canada: 800.888.8458 / +1.651.681.7600 / [insidesales@ergotron.com](mailto:insidesales@ergotron.com)

EMEA: +31.33.45.45.600 / [info.eu@ergotron.com](mailto:info.eu@ergotron.com)

APAC: [apaccustomerservice@ergotron.com](mailto:apaccustomerservice@ergotron.com)

LATAM: +1.800.681.1820 / [info.latam@ergotron.com](mailto:info.latam@ergotron.com)

Custom: [custom@ergotron.com](mailto:custom@ergotron.com)

© Ergotron, Inc. 09.21.2022

Literature made in the U.S.A.

Content subject to change.

Ergotron devices are not intended to cure, treat, mitigate or prevent any disease.

Patent information available at [www.ergotron.com/patents](http://www.ergotron.com/patents).

