

# DASYLab SPS Edition

Your PLC tool for:

- Commissioning
- Plant optimization
- Process monitoring
- Fault diagnosis
- Quality control

# DASYLab SPS Edition

Visualize, analyze and document PLC data

# Efficient commissioning and analyzation of process controllers

DASYLab SPS Edition supports users of SIMATIC® controllers S5/S7 in commissioning, optimization and continued monitoring. The software package can be installed on the programming device or on a PC or notebook. All data stored in the process image of the controller can be accessed for reading or writing via Profibus/Profinet, Ethernet or MPI.

## „Easy to use“: DASYLab for PLC analysis

DASYLab SPS Edition is based on the proven data acquisition software DASYLab and impresses with the same astonishingly simple user concept: Data acquisition applications can be created graphically and interactively in the form of a data flow chart without any programming. The user places the required function modules in the worksheet on the programming device/PC,

links them to other modules and adapts them to the current task using structured configuration dialogs. It couldn't be simpler.

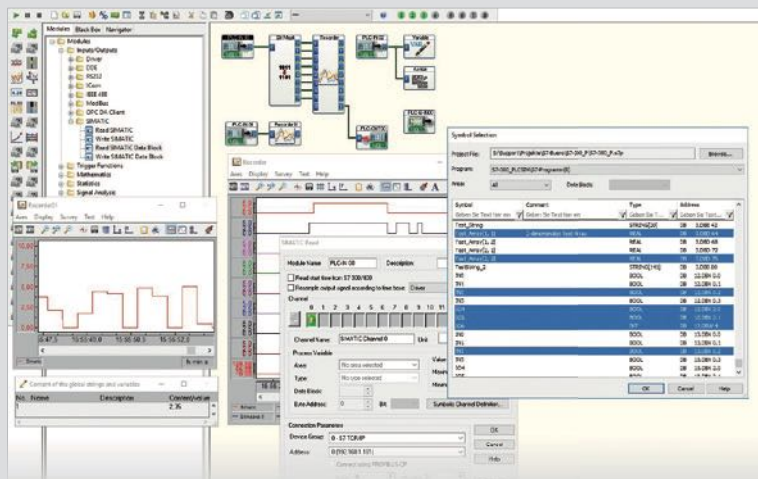
## All-rounder in the PLC toolbox

DASYLab SPS Edition offers a wide range of functions for troubleshooting and fault diagnosis, debugging and documentation. Measurement values to be monitored are visualized directly. In particular, sophisticated logging functions make it possible to quickly identify and localize even sporadic errors. Other measurement hardware can also be used in parallel with the recording of the PLC signals. All recorded signals can then be analyzed together. Data exchange with Microsoft Excel or databases as well as other Windows software also poses no difficulty.



## Importing the variables

All variables from the symbolics of the PLC project are imported into the measurement program and are immediately available for any type of analysis.



## Diverse display options

Numerous display modules are available for online visualization of the exported process variables and analysis results, including chart recorder, freely scalable analog instruments, bar graphs and status indicators.

## DASYLab SPS Edition – Reliable support in commissioning and plant optimization:

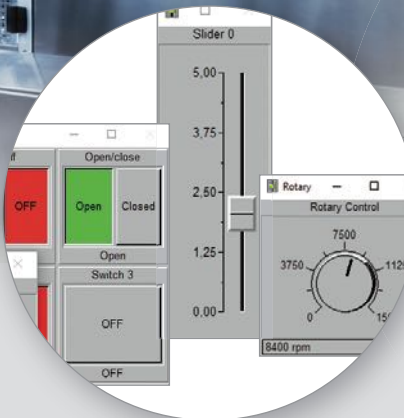
- Rapid fault diagnosis and troubleshooting
- Continuous process monitoring
- Reliable recording of process data for quality control





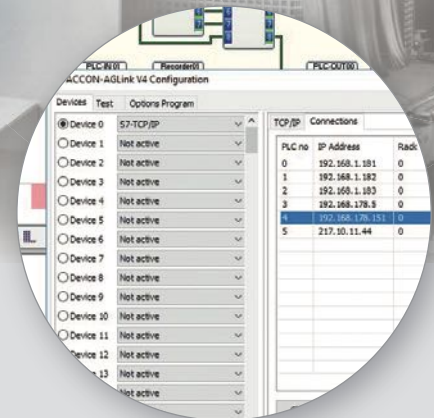
### Convenient channel selection

PLC parameters to be monitored, such as data blocks, can be easily selected and addressed via dropdown menu.



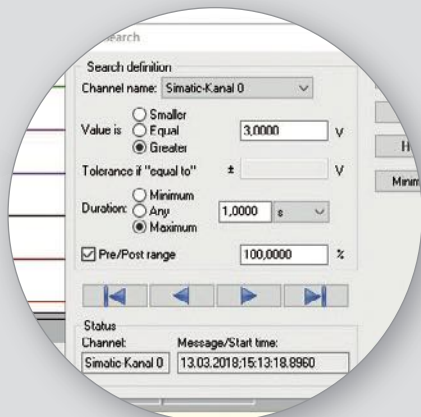
### Customized user interfaces

The user interfaces for monitoring, evaluation, troubleshooting and documentation can be easily customized with switches, chart recorders and other functions.



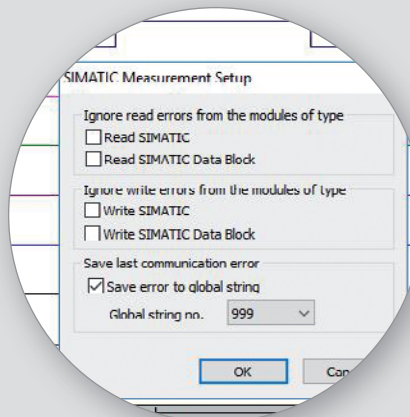
### PLC favorites management included

Frequently used addresses for various PLC connections are saved with integrated connection test. With just a single worksheet, it is possible to address different controllers in rapid alternation.



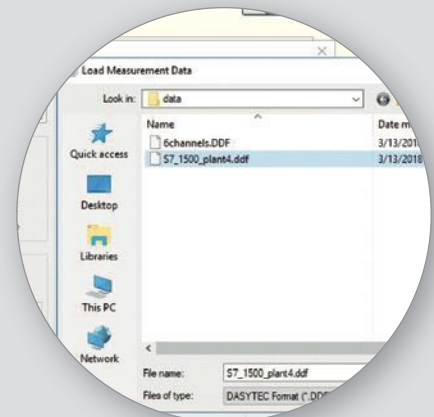
### Efficient fault diagnosis

Numerous functions for event searches, such as triggers, relays and actions, make it possible to quickly localize and analyze even sporadically occurring errors.



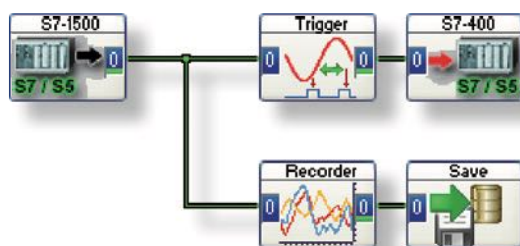
### Robust long-term measurements

Monitored process signals are continuously recorded. In the event of a fault or interruption of communication with the PLC, such as a power outage, the data recording is not interrupted. The downtimes are also recorded.



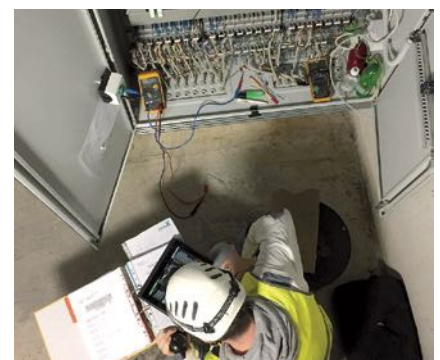
### Individual result logs

Measured data can be saved in a wide range of formats for later offline analysis. Log sheets and reports can be individually designed and configured.



### Ready to use

Installed on a Windows-based programming device, PC or notebook, DASyLab SPS Edition can be used very flexibly right where you need it.



# DASYLab SPS Edition – Software highlights

- Recording, control and analysis of process data and function histories
- Parallel acquisition of analog and digital process signals for fault detection
- Creation of measurement logs for quality control
- Continuous monitoring of plant data
- Limit value monitoring
- Time-controlled start and stop of the data acquisition
- Monitoring of time sequences
- Linking of process data with mathematical or logical functions
- Long-term measurement with convenient analysis
- Graphical display of the transient response of control circuits
- Logging of message texts
- Action-controlled measurements
- Convenient signal selection

We are ready to assist you with service and support, standard and individualized training for all aspects of the DASYLab SPS Edition.

## Technical information:

### Available PLC Driver:

SIMATIC® S5/S7 (1500, 1200, 400, 300, 200)

### Data Exchange with PLC:

Profibus/Profinet, Ethernet, MPI

### System Requirements:

Installation on each Windows-based programming device, notebook or PC (Windows 7 or higher)

### Additional Hardware Driver:

Parallel operation with measurement hardware of several brands



DASYLab®: © 1992-2018 National Instruments Ireland Resources Limited. / Pictures SIMATIC®: © Siemens AG 2018, All rights reserved. / All product or brand names used in this brochure are the property of the respective companies.

© 2018, measX GmbH & Co. KG, Germany.  
Errata and addenda excepted.

Would you like to find out more?

**Contact us.**

## SL-automation GmbH & Co. KG

### Neu-Ulm

Marlene-Dietrich-Strasse 5  
89231 Neu-Ulm  
Germany

Tel.: +49 (0) 731 98588-790  
Mobile: +49 (0) 171 6421 536

### Moenchengladbach

Trompeterallee 110  
41189 Moenchengladbach  
Germany

info@sl-automation.de  
www.sl-automation.de