



POLYESTER STRAIN GAUGES

series P/PF

Operating temperature range
-20°C  +80°C

Temperature compensation range
+10°C  +80°C

Suffix code for temperature compensation materials
-11: Mild steel 

For ordering, the above suffix code should be added to the basic gauge type.



Applicable adhesives

CN-E	-20 ~ +80°C
RP-2	-20 ~ +80°C
PS	-20 ~ +80°C

STEEL, CONCRETE, MORTAR MATERIAL USE

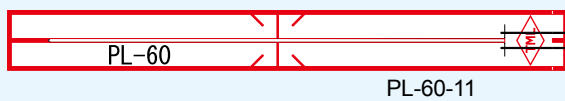
Gauge pattern	Basic type	Gauge size		Backing		Resistance Ω
		L	W	L	W	

series P

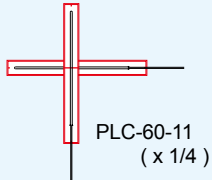


These are wire strain gauges utilizing a transparent plastic backing impregnated with polyester resin. The gauge length is available in 3 ranges of 60, 90 and 120mm, so it is suited to the measurement of concrete strain. Since the backing is transparent, the bonding position can easily be checked in the installation works.

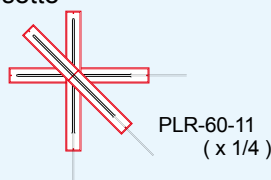
Single element



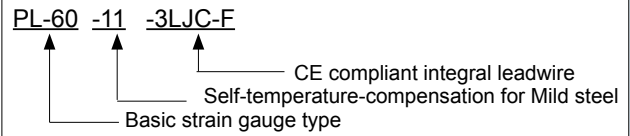
0°/90° 2-element stacked Rosette



0°/45°/90° 3-element stacked Rosette



Example of type number designation.



Integral leadwire is available only for single element PL, but not for 2-element PLC and 3-element PLR.

Single-element	Each package contains 10 gauges.				
PL-60-11	60	1	74	8	120
PL-90-11	90	1	104	8	120
PL-120-11	120	1	134	8	120

Each package contains 10 gauges.

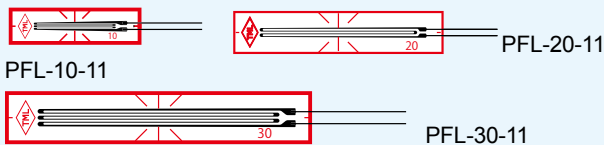
0°/90° 2-element stacked Rosette	Each package contains 10 gauges.				
PLC-60-11	60	1	74	74	120
0°/45°/90° 3-element stacked Rosette	Each package contains 10 gauges.				
PLR-60-11	60	1	74	74	120

series PF

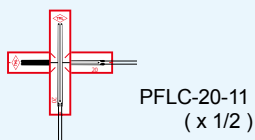


These are foil strain gauges utilizing a polyester resin backing which is the same as the P series. The gauge length is available in 3 ranges of 10, 20 and 30mm, so it is suited mainly to strain measurement on concrete or mortar. The backing is transparent and the installation is easy.

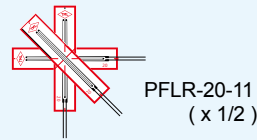
Single element



0°/90° 2-element stacked Rosette



0°/45°/90° 3-element stacked Rosette



Single element	Each package contains 10 gauges.				
PFL-10-11	10	0.9	17.5	5	120
PFL-20-11	20	1.2	28	6	120
PFL-30-11	30	2.3	40	7	120

Each package contains 10 gauges.

0°/90° 2-element stacked Rosette	Each package contains 10 gauges.				
PFLC-20-11	20	1.2	28	28	120
PFLC-30-11	30	2.3	40	40	120
0°/45°/90° 3-element stacked Rosette	Each package contains 10 gauges.				
PFLR-20-11	20	1.2	28	28	120
PFLR-30-11	30	2.3	40	40	120

Recommendable integral leadwire for P/PF series with single element.
No integral leadwire is available for rosette element PLC, PLR, PFLC and PFLR.

Application	Leadwires	Operating temperature (°C)	Leadwire code exemplified
General use (temperature unchanged during measurement)	Paralleled vinyl -LJB-F/ -LJC-F	-20~ +80	PL-60-11-3LJB-F PFL-10-11-3LJC-F
General use	3-wire paralleled vinyl -LJBT-F/-LJCT-F	-20~ +80	PL-60-11-3LJBT-F PFL-10-11-3LJCT-F
1-gauge 4-wire measurement	0.08mm ² polypropylene 4-wire paralleled -LQM-F	-20~ +100	PL-60-11-3LQM-F