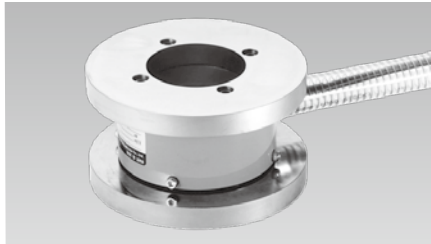


LOAD CELLS

KCC-NA Center-hole type Compression Load Cell 200kN~1MN



Large center-hole diameter
Flange-mounted

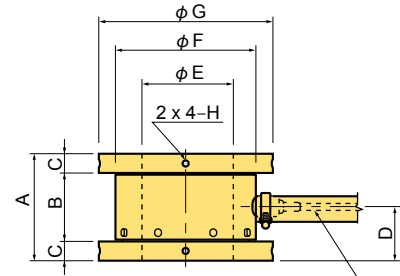
The KCC-NA is a center-hole-type load cell with flanges. The large diameter of its center hole makes this load cell suitable for use in almost all anchoring methods. It can deliver stable measurement performance under a relatively high eccentric load.

Protection ratings: IP67 equivalent

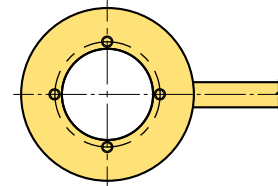
■ SPECIFICATIONS

TYPE	KCC-200KNA	KCC-500KNA	KCC-1MNA
Capacity	200kN	500kN	1MN
Rated Output	1mV/V (2000×10 ⁻⁶ strain) ±10%		
Non-linearity	1%RO		
Hysteresis	1%RO		
Temperature effect on zero	0.1%RO/°C		
Temperature effect on span	0.05%/°C		
Compensated temperature range	-10 ~ +60°C		
Temperature range	-20 ~ +70°C		
Over load	120%		
Input/Output resistance	350Ω±1%		
Recommended exciting voltage	Less than 10V		
Allowable exciting voltage	20V		
Zero balance	5%RO		
Weight	13kg	20kg	32kg

Input/Output cable : φ9mm 0.5mm² 4-core shielded chloroprene cable 5m



Input/Output cable
Protective tube (Outer: φ33mm) 0.3m



■ Dimensions

TYPE	A	B	C	D	φE	φF	φG	H
KCC-200KNA	108	68	20	54	90	145	190	-
KCC-500KNA	140	90	25	70	120	185	230	M 8 DP20
KCC-1MNA	183	123	30	92	140	220	250	M12 DP20

KCG-200KNA Center-hole type Compression Load Cell 200kN



Small size
Light weight
Low price

Small and inexpensive center-hole load cell enabling installation at the strand anchoring part in bridge, etc.

Protection ratings: IP67 equivalent

■ SPECIFICATIONS

TYPE	KCG-200KNA
Capacity	200kN
Rated Output	4500×10 ⁻⁶ strain
Non-linearity	05%RO
Hysteresis	0.5%RO
Natural frequency	44kHz
Allowable temperature range	-30 ~ +70°C
Over load	120%
Weight	250g

Input/Output cable : φ3mm 0.05mm² 4-core shielded chloroprene cable 2m

