

User Manual

Anybus[®] Communicator for LonWorks- LWTool

Rev. 1.1

HMS Industrial Networks AB



			
Germany	+49	- 721 – 96472 – 0	ge-sales@hms-networks.com
Japan	+81	- 45 – 478 – 5340	jp-sales@hms-networks.com
Sweden	+46	- 35 – 17 29 20	sales@hms-networks.com
U.S.A.	+1	- 312 – 829 – 0601	us-sales@hms-networks.com
France	+33	- 3 89 32 76 76	fr-sales@hms-networks.com
Italy	+39	- 347 – 00894 -70	it-sales@hms-networks.com
China	+86	- 10 – 8532 – 3183	cn-sales@hms-networks.com



Table of Contents

Preface.....	1
About This Document	1
How To Use This Document.....	1
Important User Information	1
Revision List	2
Support	3
About the ABC LON-RTU Slave	1
Overview	1
Connectors.....	2
LED	2
LonWorks Connector.....	3
RS232/RS422/RS485.....	3
Power connector	3
General	4
Software Installation	6
System Requirements.....	6
Minimum:.....	6
Recommended:	6
Installation Procedure	6
User Interface information	7
Node Menu.....	7
Network Variable Menu Explanation	8
Config Properties Menu.....	9
File Management.....	10
Templates.....	10
External Interface Files (.XIF)	10
Node Documentation Files (.HTML)	10
Configuration Files (.DAT)	10
Create a non-LonMark Compliant Project & Add Network Variables.....	11
Open an Existing Project & Import an Object with Predefined Variables	12
Create a LonMark Compliant Project & Add an Empty Object	Error! Bookmark not defined.
Download Program.....	13

Preface

About This Document

How To Use This Document

This document contains a general introduction as well as a description of the technical features provided by the Anybus Communicator, including the PC-based configuration software

The reader of this document is expected to be familiar with industrial networking systems, and communication systems in general.

For more information, documentation etc., please visit the HMS website, 'www.anybus.com'.

Important User Information

The data and illustrations found in this document are not binding. We, HMS Industrial Networks AB, reserve the right to modify our products in line with our policy of continuous product development. The information in this document is subject to change without notice and should not be considered as a commitment by HMS Industrial Networks AB. HMS Industrial Networks AB assumes no responsibility for any errors that may appear in this document.

There are many applications of this product. Those responsible for the use of this device must ensure that all the necessary steps have been taken to verify that the application meets all performance and safety requirements including any applicable laws, regulations, codes, and standards.

Anybus® is a registered trademark of HMS Industrial Networks AB. All other trademarks are the property of their respective holders.

The examples and illustrations in this document are included solely for illustrative purposes. Because of the many variables and requirements associated with any particular implementation, HMS Industrial Networks cannot assume responsibility or liability for actual use based on these examples and illustrations.

Warning:	This is a class A product. In a domestic environment this product may cause radio interference in which case the user may be required to take adequate measures.
ESD Note:	This product contains ESD (Electrostatic Discharge) sensitive parts that may be damaged if ESD control procedures are not followed. Static control precautions are required when handling the product. Failure to observe this may cause damage to the product.

Revision List

Revision	Date	Author	Chapter	Description
0.10	02-11-11	ANGU	All	Created
1.00	03-01-21	ANGU	All	Updated
1.01	03-01-22	MFA		HMS version
1.1	09-03-19	ICI/CHDA	All	New layout

Support

HMS Sweden (Head Office)

E-mail: support@hms-networks.com
Phone: +46 (0) 35 - 17 29 20
Fax: +46 (0) 35 - 17 29 09
Online: www.anybus.com

HMS North America

E-mail: us-support@hms-networks.com
Phone: +1-312-8290605
Toll Free: 888-8-Anybus
Fax: +1-312-738-5873
Online: www.anybus.com

HMS Germany

E-mail: ge-support@hms-networks.com
Phone: +49-721-96472-0
Fax: +49-721-964-7210
Online: www.anybus.com

HMS Japan

E-mail: jp-support@hms-networks.com
Phone: +81-45-478-5340
Fax: +81-45-476-0315
Online: www.anybus.com

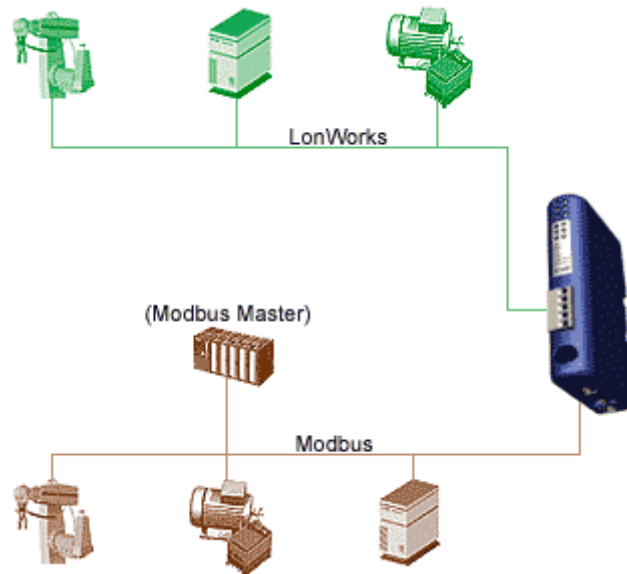
HMS China

E-mail: cn-support@hms-networks.com
Phone: +86 10 85 32 3023
Online: www.anybus.com

HMS Italy

E-mail: it-support@hms-networks.com
Phone: +39 039 59662 27
Online: www.anybus.com

About the Anybus Communicator for LonWorks Overview



The Anybus Communicator for LonWorks, or 'ABC' is a product that interfaces between a ModBus RTU network and a LonWorks network. The gateway acts as ModBus slave. All data in the variables are presented in the ModBus registers without any interference; no calculations, scaling or customizations are made.

The gateway makes it possible to convert ModBus registers data to LonWorks Variables (SNVT's and/or UNVT's). You can create a set of variables according to LonMark functional Profiles or you can create your own set of variables with User defined Network Variables (UNVT's). Configuration is made with the configuration tool "*ABC LWTool*" which can be purchased from HMS. Holding registers (4X reference) will be connected to network output variables (NVO).

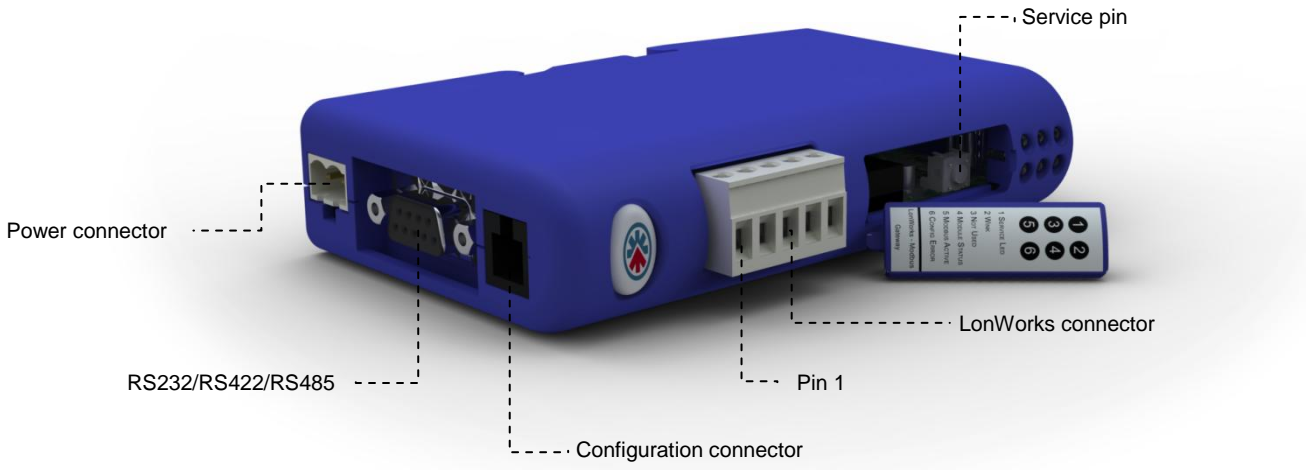
Input registers (3X reference) will be connected to network input variables (NVI).

Connectors

LED

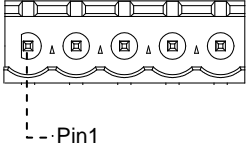
LED	Function
1	<p>Flashing Green: This node has an application but is not yet installed in a network (unconfigured).</p> <p>Off: This node is configured and installed in a network.</p> <p>Solid Green: This node is unconfigured and application less. Indicates errors detected by the Neuron Self-Test routine.</p>
2	<p>Off: Normal state</p> <p>Flashes Red: A wink command is received on the LonWorks network.</p>
3	Not used
4	<p>Solid Green: The module has been initiated correct and is working ok.</p> <p>Flashes Red: Software error. Restart the module.</p> <p>Solid Red: A hardware error has occurred.</p>
5	<p>Solid Red: At start and if no Modbus messages have been received for more than 5 sec.</p> <p>Solid Green: After receiving correct Modbus message and correct start-up.</p>
6	<p>Solid Green: Normal state.</p> <p>Flashes Red: No configuration saved in the gateway.</p>





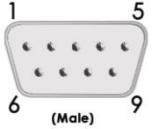
LonWorks Connector

Pin	Function
1	Shield
2	-
3	-
4	Net B
5	Net A



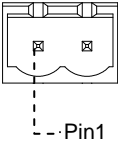
RS232/RS422/RS485

Pin	Function	RS232	RS422	RS485
1	+ 5VDC	•	•	•
2	RS232 Rx	•		
3	RS232 Tx	•		
4	Not connected			
5	GND	•	•	•
6	RS422 Rx +		•	
7	RS422 Rx -		•	
8	RS485 + / RS422 Tx +		•	•
9	RS485 - / RS422 Tx -		•	•

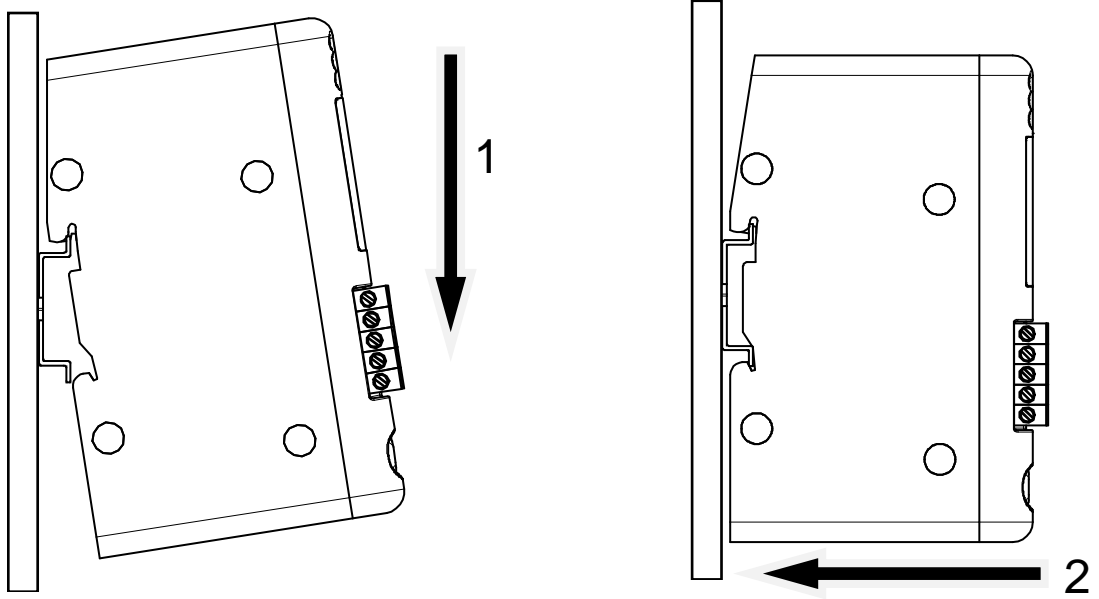


Power connector

Pin	Function
1	V _{in} +24 VDC
2	GND



DIN rail mounting



Introduction to LWTool

The ABC LWTool is an easy to use configuration tool suitable for the Anybus Communicator interface. It provides a user friendly way of specifying a desired set of network variables and map them to ModBus registers. The finished configuration can then be downloaded via the HMS LWDownload utility, see 13 “ConfigDownload Program”

A fast learning curve and visual user interface allows complete network configurations to be built without spending precious time learning a new program.

(For installation instructions, see 4-1 “Software Installation”).

Nodes can be customized to fit a specific application. Customized configurations is be made up of User defined Variables only, while LonMark compliant nodes require predefined Standard Network Variables.

Furthermore, projects and objects can be stored to build a custom library, resulting in a more efficient way to do the next project in the same area of application; just open a suitable project and make the necessary adjustments and/or add a suitable object.

Software Installation

System Requirements

Minimum:

- Windows 98/ME/NT/2000/XP/Vista
- Pentium class CPU running at 133MHz
- 32Mb RAM
- 800x600 resolution color display

Recommended:

- Windows 98/ME/NT/2000/XP
- Pentium class CPU running at 200MHz or higher
- 64Mb RAM
- 1024x768 resolution display
- 16 bit color

Installation Procedure

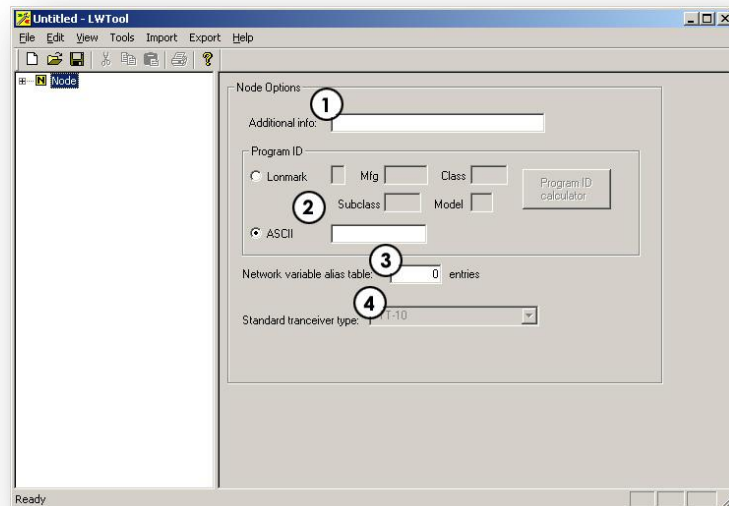
The installation screen should appear automatically when inserting the supplied software CD. If not, open the CD device and double click on 'index.html'.

- Install ABC LWTool by clicking 'LWTool' and follow the on screen instructions.
- Install the serial hardware driver by clicking 'Hardware driver' and follow the on screen instructions.
- Click 'Readme.txt' to read supplementary information such as release notes etc.

User Interface information

Node Menu

When starting the LWTool program you will see the following windows on the screen:



1. Additional info

This information will be presented in the Self Documentation string, seen by the network Management tool. Choose a suitable name for your node.

2. Program ID

Here you chose if you are going to do a configuration that should comply with a LonMark approved Functional Profile or not. NOTE! The possibility to create LonMark configurations is disabled by default. Please contact support@hms.se if you need to create a LonMark configuration.

- **LonMark**

When choosing LonMark, the boxes need to be filled in. This can be generated with the Program ID calculator. Consult the LONMARK® Application Layer Interoperability Guidelines for more information

- **ASCII**

This field is used when no LonMark profiles are used. You can write max. 8 character as a description of the node/product in ASCII format.

3. Network variable alias table

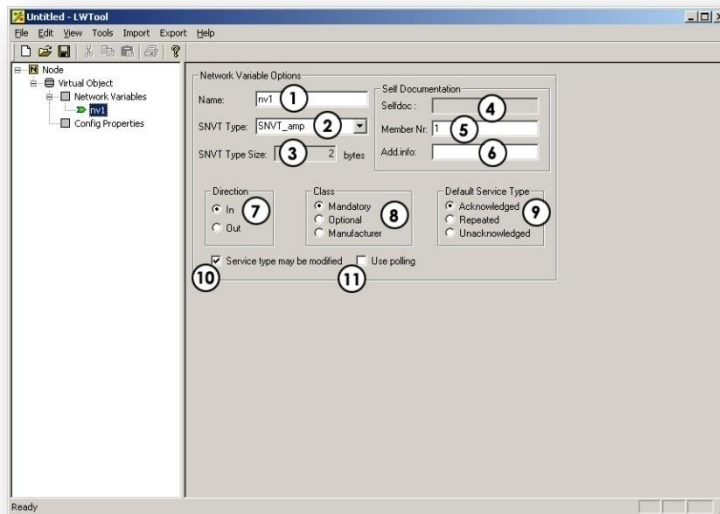
Network variable aliases are required on a node when a single network variable output on the node must be connected to two or more network variable inputs on another node.

4. Standard transceiver type

This Gateway only supports the FTT-10 Transceiver type.

Network Variable Menu Explanation

When adding a Network Variable, the following windows will be shown on the screen:



1. Name

The name should start with *nvi* or *nvo* depending on if it is an input or an output, i.e. *nviChillerEnable*, *nvoOnOff*

2. SNVT Type

In this field you can change the SNVT type, or chose a User defined variable, UNVT. To easy find the SNVT variable you want, start writing the variable name and you will see suggestions on names coming up.

3. SNVT Type Size

If selecting UNVT, you will have to set Variable type size. Otherwise it is just for your information.

4. Selfdoc

This string is auto generated. To understand the string, see *LONMARK® Application Layer Interoperability Guidelines, chapter 5*.

5. Member Nr

This is the variable index in the object. See the specific LonMark Profile object for more information. In the 8040 object, index of *nviChillerEnable* is 1, index of *nvoActiveSetpt* is 4 and so on.

6. Add info

This information will be placed after the semicolon in the self documentation string. Usually the info could be *ChillerEnable* for *nviChillerEnable*.

7. Directions

Here you select the direction of the variables; the icon of the variable is green for input and red for output variables.

8. Class

This information is maintained from LonMark and is specified for each variable in the Object of a Profile.

9. Default Service Type

Set default as Acknowledge; see *LONMARK® Application Layer Interoperability Guidelines for further information*.

10. Service type may be modified

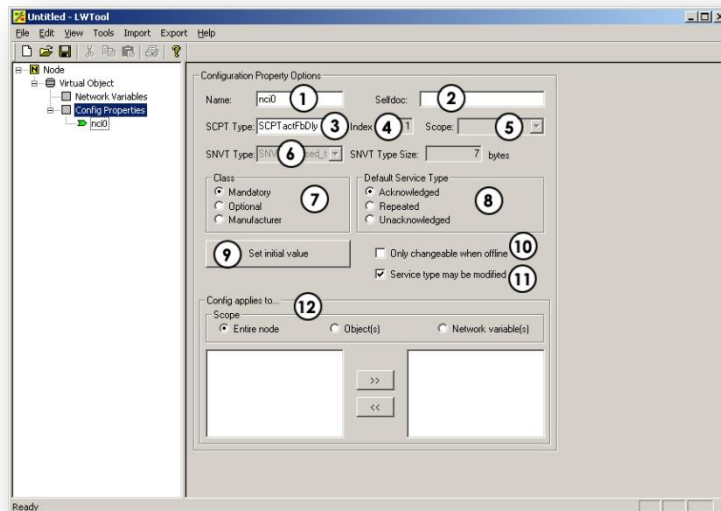
Set if the network management tool will be able to change service type (recommended in most cases)

11. Use polling

This functionality is for *nvi*'s only. If this option is selected, the ABC will send a network variable poll message to the connected *nvo* to synchronize the variable during start-up.

Config Properties Menu

When adding a Variable in the Configuration Properties, the following windows will appear:



1. **Name**
The name should begin with 'nci', e.g. 'nciLocation'
2. **Selfdoc**
For non LonMark compliant nodes it is possible to add additional information (see previous page). For LonMark compliant nodes, consult the LONMARK® Application Layer Interoperability Guidelines for more information about the self documentation string.
3. **SCPT Type**
This field specifies the SCPT variable type for the nci-name. If a user defined variable is used (UCPT), Index and Scope has to be entered. (see below)
4. **Index**
When using UCPT variables, this field should contain the index number. (Consult the LONMARK® Application Layer Interoperability Guidelines for specific information.)
5. **Scope**
This field is only used when using UCPT variables, consult the LONMARK® Application Layer Interoperability Guidelines for specific information.
6. **SNVT Type**
When using UCPT variables, this field should contain a suitable SNVT variable.
7. **Class**
Consult the LONMARK® Application Layer Interoperability Guidelines for more information.
8. **Default Service Type**
Set by default as 'Acknowledged'; consult the LONMARK® Application Layer Interoperability Guidelines for further information.
9. **Set initial value:** This field is used to set the initial value in hexadecimal "raw-data" form, i.e. if the range of the variable is -163.840% to 163.830% (0.005%), this means that each step is 0.005% . If you want to set 100% as default, it would be $100/0.005$ which is $20000 = 4E,20$ in HEX
10. **Only changeable when offline:** When this option is enabled, it is only possible to make changes to the variable when the node is off line.
11. **Service type may be modified:** This option should be set if the network management tool should be able to change the service type (recommended in most cases)
12. **Config applies to...:** This entry defines the scope of the configuration property. Configuration properties that belong to an object shall be declared as a part of the object and not declared as a part of the node. Similarly, a configuration property associated with a specific network variable(s) shall be declared as belonging to the network variable(s) and not the object or the node. Consult the LONMARK® Application Layer Interoperability Guidelines for more information.

File Management

Project Files (.PRJ)

The configuration can be saved for later use using the menu entries ‘Save’ and ‘Save As..’ in the ‘File’ menu. To retrieve the saved project at a later stage, use the ‘Open’ entry. Please note that project files cannot be downloaded directly into the LonWorks interface. To do this, the project must be exported as a Configuration File (.DAT), see 3-6 “Configuration Files (.DAT)”.

Templates

Projects can be saved as templates to be used as a basis for new implementations. To create a new template, save the project in the ‘\templates\’ sub folder in the ABC LWTTool program folder. To use a template, select the ‘New’ entry in the ‘File’ menu. Select the desired template in the dialog box that follows and click ‘OK’.

External Interface Files (.XIF)

This file is used by the Network Management tool when installing the LonWorks interface. To export a .XIF file, select the ‘XIF File’ entry in the ‘Export’ menu. It

is also possible to import .XIF files from existing products with similar functionality to use as a basis for new implementations. Node Documentation Files (.HTML)

A node documentation file contains information about the configuration in standard .HTML format. To export a node documentation file, select the ‘Node Documentation (HTML)’ entry in the ‘Export’ menu.

Note: It is not possible to import Node Documentation files. Be sure to save the project using the ‘Save’ / ‘Save as’ entries in the ‘File’ menu.

NV Index Name	SNVT Type	SNVT Length (bytes)	Register Type	Modbus Address	
0	nvoObjRequest	SNVT_obj_request (92)	3	Input	30001-30002
1	nvoObjStatus	SNVT_obj_status (93)	6	Holding	40001-40003
2	nvoDrvSpeedSpt	SNVT_switch (95)	2	Input	30003-30003
3	nvoDrvSpeedScale	SNVT_lev_percent (81)	2	Input	30004-30004
4	nvoDrvCurnt	SNVT_amp (1)	2	Holding	40004-40004
5	nvoDrvSpeed	SNVT_lev_percent (81)	2	Holding	40005-40005
6	nvoDrvVoh	SNVT_volt (44)	2	Holding	40006-40006
7	nvoDrvPwr	SNVT_power_kilo (28)	2	Holding	40007-40007
8	nvoDrvRunHours	SNVT_time_hour (124)	2	Holding	40008-40008
9	nciLocation	SNVT_str_asc (36)	31	Input	30005-30020
10	nciMaxSpeed	SNVT_lev_percent (81)	2	Input	30021-30021
11	nciMinSpeed	SNVT_lev_percent (81)	2	Input	30022-30022
12	nciRevHrBt	SNVT_time_sec (107)	2	Input	30023-30023
13	nciSndHrBt	SNVT_time_sec (107)	2	Input	30024-30024
14	nciMinOutTm	SNVT_time_sec (107)	2	Input	30025-30025
15	nciNmISpeed	SNVT_rpm (102)	2	Input	30026-30026
16	nciNmIFreq	SNVT_freq_hz (76)	2	Input	30027-30027
17	nciRampUpTm	SNVT_time_sec (107)	2	Input	30028-30028
18	nciRampDownTm	SNVT_time_sec (107)	2	Input	30029-30029
19	nciDrvSpdScl	SNVT_lev_percent (81)	2	Input	30030-30030

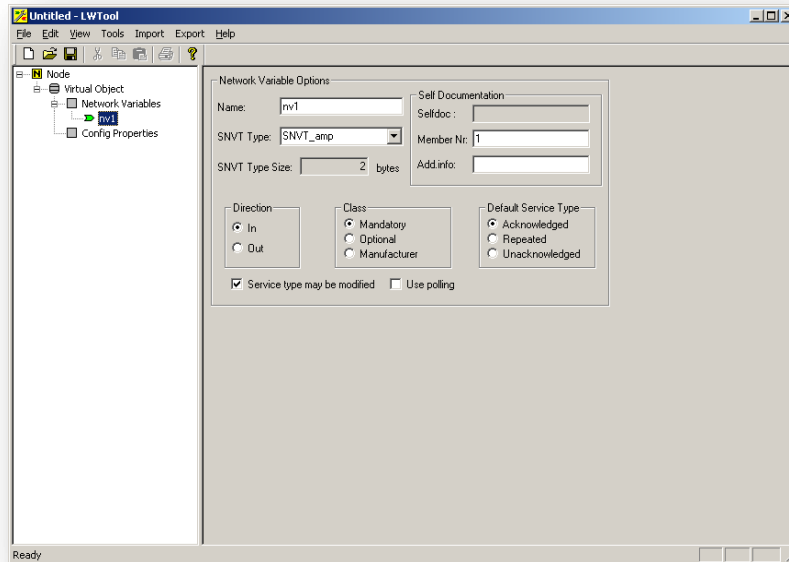
Configuration Files (.DAT)

The finished configuration can be exported as a .DAT file to be downloaded into the LonWorks interface using the Firmware Download utility (see A-1 “HMS Firmware Download Utility”).

Note: It is not possible to import .DAT files into the ABC LWTTool utility. Be sure to save the project using the ‘Save’ / ‘Save as’ functions in the ‘File’ menu.

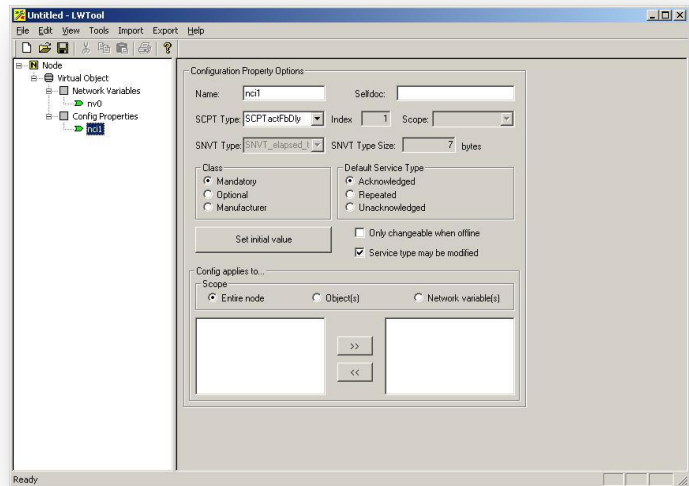
Create a non-LonMark Compliant Project & Add Network Variables

After starting ABC LWTTool, select the 'New' entry in the 'File' menu, and choose 'Empty Object'. This gives the node a Virtual Object where network variables and Configuration Properties can be added by right clicking on 'Network Variables' / 'Configuration Properties', and choosing 'Add Network variable' / 'Add Config Property'



1. Select 'Node' and enter a name for the node under 'Additional info' in 'Node Options'
2. Select 'ASCII' and write max. 8 character name for 'Program ID'
3. Enter no. of entries in the 'Network Variable alias table'
4. Add network variables by right clicking on 'Network Variables' and select 'Add network variable'
5. Change the name of the variable to either to 'nvi' or 'nvo'.
6. Change SNVT type to UNVT (User defined).
7. The 'Member number' will increase automatically, but can be altered manually if necessary.
8. Enter the name in 'Add. info'.
9. Enter the length of the UNVT variable
10. Select the direction of the variable ('In' or 'Out')
11. Select the 'Manufacturer' entry under 'Class'
12. Select the desired 'Default Service Type'
13. If no special customer demands are required, enable 'Service type may be modified'

14. 'Use polling' - this functionality is for 'nvi's' only. If this option is selected, the LMS will send a network variable poll message to the connected 'nvo' to synchronize the variable during start-up. Repeat until all network variables are added
15. Right click on 'Config Properties' and select 'Add Config Property'
16. Enter the name of the variable using 'nci' in the beginning of the variable under 'Name'
17. Enter the name without 'nci' under 'Selfdoc'
18. Select SCPT type or use a UCPT if you need something not listed. Note that when using UCPT, additional information must be entered ('Variable Index' and 'SNVT Type')
19. Choose Class
20. Choose the Default Service Type
21. If necessary, set the initial value by clicking on the 'Initial Value' button.
22. Only changeable when offline: Make it possible to do changes to the variable only when the node is offline
23. **Service type may be modified:** Enable this option if the network management tool should be able to change service type (recommended in most cases)
24. **Scope:** This declaration defines the scope of the configuration property. Configuration properties that belong to an object shall be declared as a part of the object and not declared as a part of the node. Similarly a configuration property that is associated with a specific network variable(s) shall be declared as belonging to the network variable(s) and not the object or the node. See LONMARK® Application Layer Interoperability Guidelines for more information.
25. Save the project using the 'Save as' function in the 'File' menu
26. Export the project as XIF/Configuration File/Node Documentation file using the functions in the 'Export' menu.

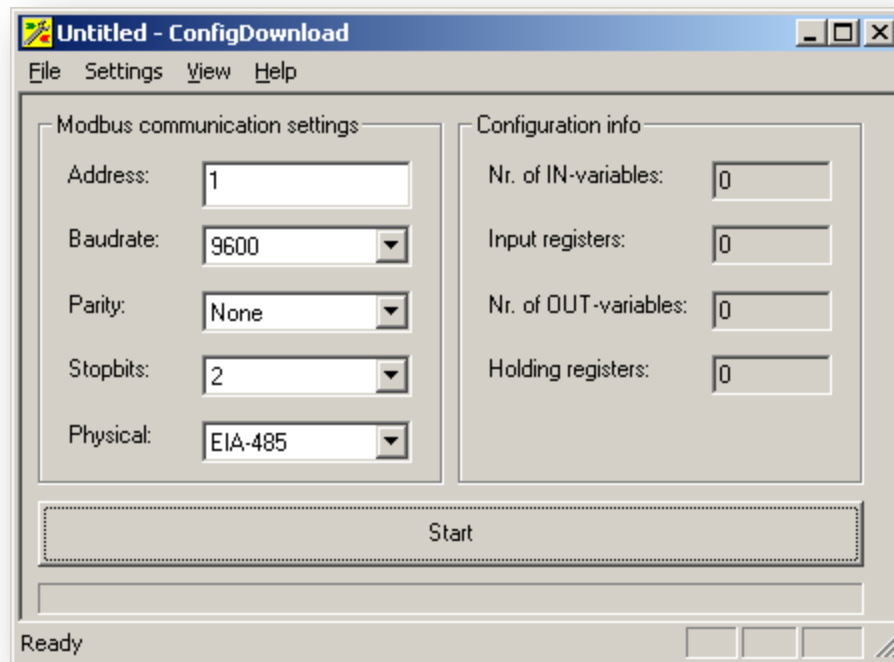


Open an Existing Project & Import an Object with Predefined Variables

1. Start ABC LWTTool
2. Click the right mouse button on 'Node'
3. Select 'Import object'
4. Select '8040_10 Chiller Controller.lbj'
5. Click 'Open'

ConfigDownload Program

In your Start menu you will have an Icon for the download program under the menu for the LWTTool. When you start you will see this window:



1. Click *File, open* and chose the Configuration file (dat-file) you want to download into the gateway. You will see that the Configuration information will change.
2. Set the Address of the gateway and all the other ModBus specific settings
3. Connect your gateway with the computer via the Configuration Cable. There are possibilities to change COM port under *Settings*.
4. Power-up the gateway
5. Press start

It is possible to change the communication settings only, without downloading a configuration file. To clear the .dat-file from the download program (if loaded), chose "new". This will clear the information in the configuration information field (you will only have zeros in the fields). Change your settings and press START.