



* The EA500/2 in the picture is not included.

RP100

Durable, multipurpose RFID reading

Looking for a durable solution for quick scanning and tagging inventory? The Unitech RP100 is a great new add-on for EA500/502.

Empowering EA500/502 for RFID/UHF application

Much inventory and stock these days is being tagged with RFID. This radio-frequency identification uses electromagnetic fields to automatically identify and track tags. This makes checking stock a lot easier instead of counting piece by piece or box by box. The RP100 comes with a holder which is specifically designed for EA500/502. You only need to slide the EA500/502 in the holder and close it. Your EA500/502 is then ready for both barcode and RFID/UHF reading. Isn't it so easy?

Warehousing/In-store inventorying at its best

RFID is becoming a widely used technique for fast and efficient warehousing and in-store inventorying. Our RP100 is designed to meet these needs. Picking large orders and checking large inventory from near to far is an easy effort thanks to the RP100 integration with our EA500/502 devices. The gun grip makes for easy and portable use and the wide range in RFID frequencies make this a widely applicable device.

Portability and durability

The gun grip with battery included weighs in at only 420 grams. The grip is made of durable material that withstands a drop up

to 1.5 meters onto a steel plate and can work in hot and cold environments. The scanner is able to do both 1D and 2D scanners and the RFID reader can read 902 - 928 MHz (US) and 865 - 868 MHz (EU) frequencies. The RP100 can do up to 600 tags per second. It also features micro-USB to communicate flawlessly with the EA500/502.

The 5200 mAh battery included in the gun grip will extend working times, this way you get longer usage. You can charge the RP100 and EA500/502 at the same time over the charging and communication cradle or the USB Type-C that is included in the box.

Features

- Optional 1D and 2D scanning capabilities.
- Reading up to 5 meters away.
- Standard with Circular antenna design or optional directive antenna.
- Up to 600 tags per second.
- Adjustable antenna output power for near to far reading.
- Rich set of SDK empowers APP to control the device and make it greatly usable.
- 5200 mAh rechargeable Li-ION battery.

unitech
because we care

► **Operation System**

CPU ARM7 Core

► **Data Capture**

Barcode (optional) 1D or 2D Imager Barcode Scanner
 RFID (UHF) 902 - 928 Mhz (US)
 865 - 868 Mhz (EU)
 916 - 921 Mhz (Japan 1W LBT)
 916 - 923 Mhz (Japan 0.25W LBT)
 Tag Reading Speed Up to 600 tags per second
 Reading range 0m - 5m
 Protocol GEN2, ISO/IEC 18000-6

► **Audio**

Buzzer

► **Environmental**

Operating temperature -20°C to 60°C
 Storage temperature -30°C to 70°C
 Charging temperature 0°C to 45°C
 Relative Humidity 5% ~ 95% (non-condensing)
 Drop Specification 1.5m to steel plate
 Sealing IP65

► **Power Source**

Main battery 3.5V 5200mAh 19.24Wh Li-ION battery
 Input DC 5V 2A
 Rechargeable Yes
 Standard I/O Port USB Type-C, VCP, HID

► **Enclosure**

Weight 420g (including battery)
 Dimension 76.1 mm x 173.7 mm x 139.8 mm
 (without holder for EA500/502)

► **Gun Handle**

Gun Handle with Battery Li-ION 3.7V, 5200mAh, Rechargeable

► **Communication**

Mount (optional) QUAD LOCK Mount Mechanism
 USB Type-C

► **RFID Module**

RFID module with Impinj R2000

► **Additional Features**

LED x 3, Buzzer and Vibrator

► **Certifications**

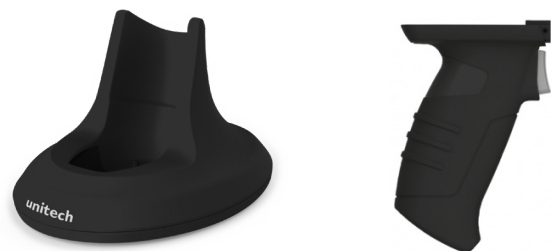
CE & RED certified
 RoHS

► **Warranty**

Device 1 year
 Battery 3 months

► **Accessoires**

Standard Interface Cradle, Charge Only, USB Type-C
 USB Type-C Cable
 Hand Strap
 Gungrip



Headquarters

Taipei, Taiwan
<http://www.ute.com> e-mail: info@hq.ute.com

unitech America

Los Angeles
<http://us.ute.com> e-mail: info@us.ute.com
<http://can.ute.com> info@can.ute.com
 Mexico
<http://latin.ute.com> e-mail: info@latin.ute.com

unitech Asia Pacific & Middle East

Taipei
<http://apac.ute.com> info@apac.ute.com / info@india.ute.com
<http://mideast.ute.com> info@mideast.ute.com

unitech Europe

Tilburg / Netherlands
<http://eu.ute.com> e-mail: info@eu.ute.com

unitech Japan

Tokyo
<http://jp.ute.com> e-mail: info@jp.ute.com

unitech Greater China

Beijing, Shanghai, Guang Zhou, Xiamen
<http://cn.ute.com> info@cn.ute.com
 Taipei <http://tw.ute.com> info@tw.ute.com

