

Best-in-Class, End-to-End Connectivity Solutions for Fixed and Mobile Applications

AirLink® Antennas

Accelerate your deployment with always-on, end-to-end connectivity provided by our portfolio of high performance AirLink® antennas. Tested and certified to provide high performance with all AirLink routers and gateways, Sierra Wireless offers an extensive portfolio of AirLink antennas—designed to connect a wide range of mobile and fixed applications in public safety, utilities, industrial and distributed enterprises.

WHY AIRLINK ANTENNAS?

- Carefully matched to operate with AirLink Routers and Gateways
- Tested and certified to enable high performance connectivity
- Vastly simplified product sourcing and ordering process
- Serviced and supported by Sierra Wireless, with 3 year warranty

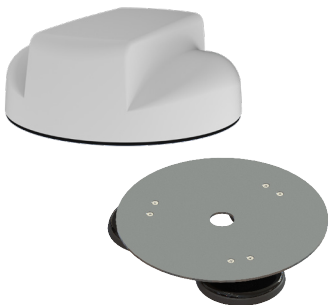
SharkFin

The SharkFin antennas have a compact OEM style housing that contain up to six high performance antenna elements for a variety of antenna solutions – 2x2 MiMo antenna elements function for 2G, 3G, and 4G LTE frequencies, and an active antenna for GNSS with 26dB gain LNA and dual band 3x3 MiMo Wi-Fi (2.4/5GHz).



VARIANT	Supported Technologies	Part Number	Recommended AirLink Routers/Gateway
6-in-1 Sharkfin	2 x LTE 698-3800 MHz (MiMo) + GNSS + 3 x Wi-Fi 2.4/5GHz (MiMo)	6001197	MG90, MP70
4-in-1 Sharkfin	2 x LTE 698-3800MHz (MiMo) + GNSS + 1 x Wi-Fi 2.4/5GHz	6001198	GX450 (Wi-Fi), LX60
3-in-1 Sharkfin	2 x LTE 698-3800MHz (MiMo) + GNSS	6001119	MP70, GX450, RV50X/RV50
3-in-1 Sharkfin WiFi	3 x 3 MiMo Wi-Fi 2.4/5GHz	6001199	MG90, MP70
2-in-1 Sharkfin	2 x LTE 698-3800MHz (MiMo)	6001120	MG90 (Second Radio), LX60
Mag Mount	Magnetic mounting without drilling a hole; Available for trial and demos	6001112	All

Dome

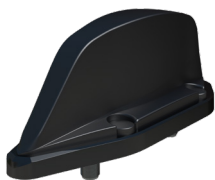


The Dome Antennas are high performance, rugged, ground plane independent MiMo antennas. They have low profile design that contains up to six isolated high performance antenna elements in a single housing for optimal coverage - two ultra-wideband elements spanning 698-2700MHz support MiMo/diversity at LTE frequencies; a high performance GNSS antenna with an integrated 26dB gain LNA, and three dualband 2.4/5GHz Wi-Fi elements that provide 3x3 MiMo Wi-Fi.

The Dome antennas are ideal for heavy duty - transit or truck installations, with a simple single bolt mounting.

	Supported Technologies	Part Number	Recommended AirLink Routers/Gateway
VARIANT			
6-in-1 Dome	2 x LTE 698-2700MHz (MiMo) + GNSS + 3 x Wi-Fi 2.4/5GHz (MiMo)	6001121 (White) 6001129 (Black)	MG90, MP70
3-in-1 Dome	2 x LTE 698-2700MHz (MiMo) + GNSS	6001136	GX450, MP70, RV50X/RV50
2-in-1 Dome	2 x LTE 698-2700MHz (MiMo)	6001123	MG90 (second radio), RV50X/RV50
Mag Mount	Magnetic mounting without drilling a hole; Available for trial and demos	6001113	All

3-in-1 Rail

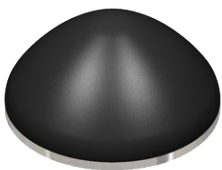


Incorporating a DC grounded element operating wideband across all frequencies from 698 to 6000MHZ, 3in1 Rail antenna is a high performance housed in a high impact, weatherproof flame retardant Ultem.

EN50155 approved, this antenna is specially designed for use on trains, trams and buses.

	Supported Technologies	Part Number	Recommended AirLink Routers/Gateway
VARIANT			
3-in-1 Rail	2 x LTE 698-6000MHz (MiMo) + GNSS	6001202	MG90, MP70

3-in-1 Wi-Fi



With three omni-directional dual band Wi-Fi elements in a single housing, the 3-In-1 Wi-Fi antenna is IP66 certified built for internal/external Wi-Fi applications. Each element is isolated from the other with a separate feed and covers both the 2.4GHz and 5.0GHz bands. The 3-In-1 Wi-Fi is easy to install and is supplied with 4m low loss cables.

	Supported Technologies	Part Number	Recommended AirLink Routers/Gateway
VARIANT			
3-in-1 Wi-Fi	3 x Wi-Fi 2.4/5GHz (MiMo)	6001122 (Black) 6001143 (White)	MG90, MP70

BAT



Efficient element design that assure high performance and robust communication link, BAT antenna is purposely designed for high-speed telematics applications that can be mounted on any non conductive surface. The isolated dual 4G/3G/2G antenna elements cover 698-960/1710-3800MHz and GNSS with the option for dual-band Wi-Fi.

	Supported Technologies	Part Number	Recommended AirLink Routers/Gateway
VARIANT			
3-in-1	2 x LTE 698-3800MHz (MiMo) + GNSS	6001200	GX450, RV50X/RV50, MP70
4-in-1	2 x LTE 698-3800MHz (MiMo) + GNSS + 1 x Wi-Fi 2.4/5GHz	6001201	GX450 (Wi-Fi), LX60

Panel



The Panel antennas comes in a compact, robust low profile housing that contains two antenna elements covering all current global cellular and LTE bands in frequency range 698-960/1710-3800MHz and active GNSS antenna. With a single bolt mount and versatile bracket, it provides ideal solution for a variety of fixed mounted applications.

	Supported Technologies	Part Number	Recommended AirLink Routers/Gateway
VARIANT			
2-in-1 Panel	2 x LTE 698-3800MHz (MiMo)	6001124 (3m)	GX450, RV50X/RV50, ES450
3-in-1 Panel	2 x LTE 698-3800MHz (MiMo) + GNSS	6001125 (3m) 6001211 (1m)	MP70, GX450, RV50X/RV50, LX60
Bracket (Wall/Pole/Mast Mount)		6001152	All

High Gain Directional



With 6dBi of peak gain at 698-960MHz and 9dBi peak gain at 1710-2700MHz, directional antenna provides extra gain for fringe coverage areas. The rugged, weather resistant housing is designed for wall/mast mounting.

	Supported Technologies	Part Number	Recommended AirLink Routers/Gateway
VARIANT			
High Gain Directional	2 x LTE 698-2700MHz (MiMo)	6001126	RV50/RV50X, ES450, LX60

Puck



Puck 2-in-1 housing incorporates antenna for LTE and GNSS with a 26dB gain LNA, offers quick installation in vehicle/desk using the acrylic adhesive.

	Supported Technologies	Part Number	Recommended AirLink Routers/Gateway
VARIANT			
Puck (Cell + GPS/GNSS)	1 x LTE 698-2700MHz (MiMo) + GNSS	6001128	FX30, LS300



Paddle

Paddle antennas are ground plane independent antennas designed with an articulated connector for flexible positioning of 0-90° pivot and a sleek ruggedized profile for durability.

	Supported Technologies	Part Number	Recommended AirLink Routers/Gateway
VARIANT			
Paddle Cell	LTE 698-2700MHz	6001110	MG90, MP70, GX450, RV50/ RV50X, ES450, FX30, LS300
Paddle Wi-Fi/Bluetooth	Wi-Fi 2.4/5GHz, Bluetooth	6001111	MG90, MP70, GX450

Reference Table

	Cable Length	Part Number	MG	MP	RV	LX	GX	ES	LS	FX
ANTENNA										
6-in-1 SharkFin	4	6001197	•	•						
6-in-1 Dome	5	6001121 (White) 6001129 (Black)	•	•						
4-in-1 SharkFin	4	6001198				•	•			
3-in-1 SharkFin	4	6001119	•	•	•		•			
3-in-1 Dome	5	6001136	•	•	•		•			
3-in-1 Rail	6	6001202	•	•						
3-in-1 SharkFin Wi-Fi	4	6001199	•	•						
3-in-1 Wi-Fi	3	6001122 (Black) 6001143 (White)	•	•						
2-in-1 SharkFin	4	6001120	•	•	•	•				
2-in-1 Dome	5	6001123	•	•	•					
4-in-1 BAT	3	6001201				•	•			
3-in-1 BAT	3	6001200		•			•			
2-in-1 Panel	3	6001124			•	•	•	•		
3-in-1 Panel	3	6001125		•	•		•			
	1	6001211								
High Gain Direction	5	6001126			•	•		•		
Puck	3	6001128							•	•
Paddle Wi-Fi		6001111	•	•	•	•	•	•	•	•
Paddle Cellular		6001110	•	•	•	•	•	•	•	•

About Sierra Wireless

Sierra Wireless is building the Internet of Things with intelligent wireless solutions that empower organizations to innovate in the connected world. We offer the industry's most comprehensive portfolio of 2G, 3G, and 4G embedded modules and gateways, seamlessly integrated with our secure cloud and connectivity services. OEMs and enterprises worldwide trust our innovative solutions to get their connected products and services to market faster.

For more information, visit www.sierrawireless.com.