

HS-210S Temperature Sensor

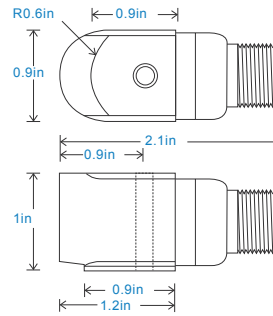
only temperature output via 3 Pin MS Connector

Key Features

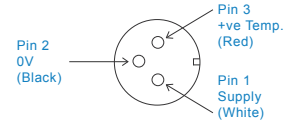
- Temperature output
- For use with data collector
- Side entry for easy access

Industries

Building services, Pulp and Paper, Mining, Metals, Utilities, Automotive, Water, Pharmaceutical



Connection Details



Technical Performance

Temperature Output 10 mV/°C standard 212°F - Option 302°F
Isolation Base isolated

Mechanical

Case Material Stainless Steel
Mounting Torque 5.9ft. lbs
Mounting Bolt provided see: 'How To Order' table x 1.2in long
Weight 4.4 oz. (nominal)
Screened Cable Assembly see: www.hansfordsensors.com for options
Connector HS-AA005 - non-booted
HS-AA068 or HS-0069 - booted
Mounting Threads see: 'How To Order' table

Electrical

Operating Voltage 4-30 VDC

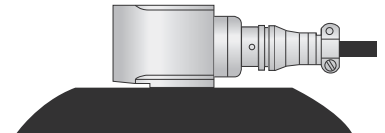
Environmental

Operating Temperature Range -67°F to see: 'How To Order' table for max
Sealing IP68
EMC EN61326-1:2013

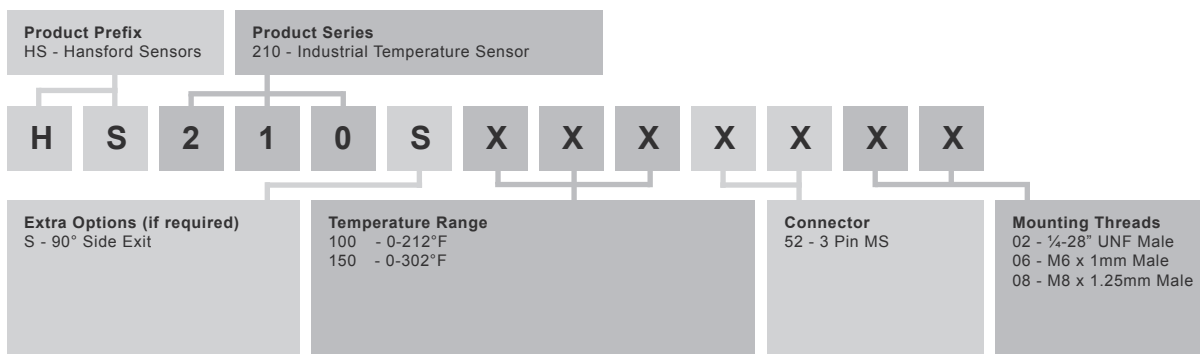
Applications

Fans, Motors, Pumps, Compressors, Centrifuges, Conveyors, Air Handlers, Gearboxes, Rolls, Dryers, Presses, Cooling, VAC, Spindles, Machine Tooling, Process Equipment

Vibration sensor should be firmly fixed to a flat surface (spot face surface may be needed to be produced and cable anchored to sensor body.)



How To Order



www.hansfordsensors.com
sales@hansfordsensors.com

We reserve the right to alter the specification of this product without prior notice
TS388U.6

